

CSS-01,02 Coarse Sun Sensors

Space Micro celebrates its 13-year anniversary in 2015 and continues to support the Space Industry with innovative, affordable and high performance Digital/Image Processing, RF Communication and Attitude Determination Sensor Products.

Space Micro's Coarse Sun Sensor is a very low-cost, high reliability device with >20 years of flight heritage. They are designed to provide attitude determination information during various mission modes including launch vehicle separation, initial attitude acquisition, emergencies and off-nominal modes. They can also provide coarse sun vector determination as a backup to higher resolution sensors.

The Coarse Sun Sensor contains a single photodiode, with the housing assembly also serving as an aperture. The inexpensive, lightweight sensor (only 20g) draws no power and has an accuracy of better than ± 5 degrees over a full angle 120 degree field of view. Sensors are available in panel mount or through-hole configurations.

The Coarse Sun Sensors have flown successfully on multiple spacecraft, including ALEXIS, HETE, MOST, CHIPSat, STPSat-1. and are compatible with virtually all launch environments.

FEATURES

- >20 Years of Flight Heritage
- Very low size and weight
- Compatible with all launch environments
- Standard lead time and pricing
- Back (CSS-01) and front (CSS-02) mount configurations
- Simple reliable design

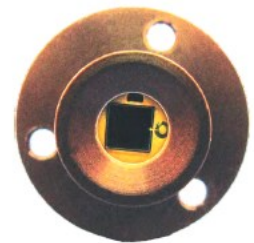
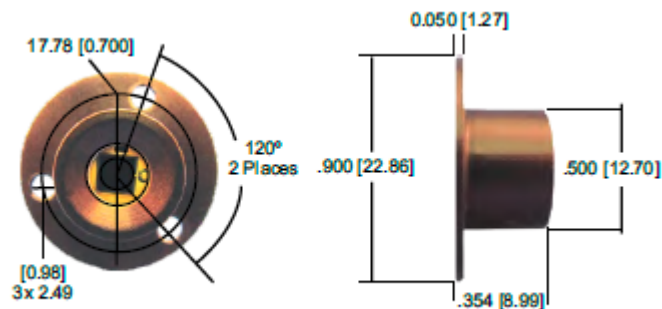


CSS-01,02 Coarse Sun Sensors

SPECIFICATIONS

Field of View	120° full-angle circular field of view
Accuracy	±5° of 1-axis knowledge
Temperature Range	-40 to +93°C
Vibration Test Levels	14.1 grms
Shock Test Levels	60g protoqual
Interface	0 to 3.5 mA (typical) current sources on two flying leads: 50" (1.27m) in length, M22759/ 33-26, 26 AWG wire
Mounting	Three #2 through holes, 120° apart on a .700" (1.78 cm) diameter pattern (See Figure below).
Power	None required
Size	
Housing diameter	.500" (1.27cm)
Flange diameter	.900" (2.286 cm)
Sensor height	0.354" (.899 cm)
Volume	0.500" (1.27 cm) diameter × .354" (0.90 cm) height
Mass	0.022 lbs (10g) with 1.27 cm flying leads

DIMENSIONS



Single Photodiode with Housing Serving as Aperture

10237 Flanders Court
San Diego, CA 92121
Tel: 858.332.0700
Email: sales@spacemicro.com
www.spacemicro.com

